



IAU Minor Planet Center

MPC Operations Status

[Processing \(Info\)](#)

[ECS: Accessible](#)

Observer Services (NEOs)

- NEO Services Overview
- NEO Confirmation
- NEO Confirmation (RA order)
- NEO Ratings
- NEO Page
- NEO Observation Planning Aid
- NEOChecker
- NEOCMTChecker

Observer Services

- Services Overview
- IAUMail
- Minor Planet & Comet Ephem.
- Natural Satellite Ephemerides
- New Object Ephemerides
- MPChecker
- CMTChecker
- Distant Artificial Satellites
- Observing List Customizer
- Sky Coverage

Orbital Elements

- Orbital Elements Overview
- MPCORB
- Orbital Elements for Programs
- MPCAT
- MPCUPDATE

Astrometric Observations

- MPCAT-OBS
- MPCOBS

Publications

- Publications Overview
- MPECs*
- MPC Archive
- MPC RSS Feeds
- CBAT RSS Feeds

Documentation

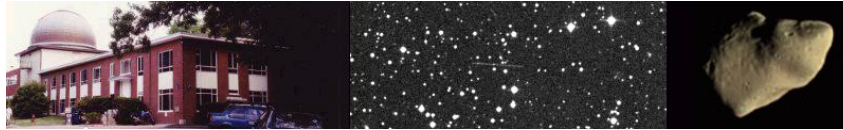
- Documentation Overview
- Minor Body Astrometry
- MPC Status Page
- What's New

Lists and Plots

- Lists and Plots Overview
- Minor Planets
- Comets
- Animations

General Information

- Astronomical Headlines



MPEC 2010-K12 : 2010 KE

The following [Minor Planet Electronic Circular](#) may be linked-to from your own Web pages, but must **not** otherwise be [redistributed electronically](#).
A form allowing access to any *MPEC* is at [the bottom of this page](#).



[Read MPEC 2010-K11](#)



[Read MPEC 2010-K13](#)

M.P.E.C. 2010-K12

Issued 2010 May 17, 17:33 UT

The Minor Planet Electronic Circulars contain information on unusual minor planets and routine data on comets. They are published on behalf of Commission 20 of the International Astronomical Union by the Minor Planet Center, Smithsonian Astrophysical Observatory, Cambridge, MA 02138, U.S.A.

Prepared using the [Tamkin Foundation Computer Network](#)

MPC@CFA.HARVARD.EDU

URL <http://www.minorplanetcenter.org/iau/mpc.html>

ISSN 1523-6714

2010 KE

Observations:

| | | | | | | | | | | | | |
|----------|--------|----|----------|----|----|-------|-----|----|------|------|---|----------|
| K10K00E* | C2010 | 05 | 16.33725 | 15 | 54 | 04.46 | -16 | 36 | 34.2 | 19.1 | V | EK012G96 |
| K10K00E | C2010 | 05 | 16.34326 | 15 | 54 | 06.73 | -16 | 37 | 44.1 | 19.6 | V | EK012G96 |
| K10K00E | C2010 | 05 | 16.34929 | 15 | 54 | 09.03 | -16 | 38 | 54.3 | 19.4 | V | EK012G96 |
| K10K00E | C2010 | 05 | 16.42594 | 15 | 54 | 39.16 | -16 | 53 | 45.3 | 19.6 | V | EK012G96 |
| K10K00E | C2010 | 05 | 16.42637 | 15 | 54 | 39.27 | -16 | 53 | 49.9 | 19.4 | V | EK012G96 |
| K10K00E | C2010 | 05 | 16.42680 | 15 | 54 | 39.52 | -16 | 53 | 54.8 | 19.2 | V | EK012G96 |
| K10K00E | C2010 | 05 | 16.42722 | 15 | 54 | 39.67 | -16 | 53 | 59.9 | 19.2 | V | EK012G96 |
| K10K00E | C2010 | 05 | 16.42804 | 15 | 54 | 39.99 | -16 | 54 | 09.5 | 19.3 | V | EK012G96 |
| K10K00E | C2010 | 05 | 16.42843 | 15 | 54 | 40.17 | -16 | 54 | 13.9 | 19.2 | V | EK012G96 |
| K10K00E | C2010 | 05 | 16.42880 | 15 | 54 | 40.28 | -16 | 54 | 18.3 | 19.7 | V | EK012G96 |
| K10K00E | C2010 | 05 | 16.42918 | 15 | 54 | 40.46 | -16 | 54 | 22.6 | 19.4 | V | EK012G96 |
| K10K00E | KC2010 | 05 | 17.03388 | 16 | 00 | 09.73 | -19 | 02 | 24.1 | | | EK012J95 |
| K10K00E | SC2010 | 05 | 17.03871 | 16 | 00 | 12.14 | -19 | 03 | 29.2 | | | EK012J95 |
| K10K00E | KC2010 | 05 | 17.04361 | 16 | 00 | 14.43 | -19 | 04 | 33.6 | 19.6 | R | EK012J95 |
| K10K00E | C2010 | 05 | 17.23696 | 16 | 02 | 17.61 | -19 | 47 | 31.6 | 19.1 | R | EK012H01 |
| K10K00E | C2010 | 05 | 17.23745 | 16 | 02 | 19.00 | -19 | 47 | 27.7 | 18.8 | R | EK012651 |
| K10K00E | C2010 | 05 | 17.23996 | 16 | 02 | 20.30 | -19 | 48 | 03.8 | 18.9 | R | EK012651 |
| K10K00E | C2010 | 05 | 17.24247 | 16 | 02 | 21.59 | -19 | 48 | 39.4 | 18.8 | R | EK012651 |
| K10K00E | C2010 | 05 | 17.24465 | 16 | 02 | 21.42 | -19 | 49 | 20.1 | 18.7 | R | EK012H01 |
| K10K00E | C2010 | 05 | 17.25273 | 16 | 02 | 25.41 | -19 | 51 | 14.1 | 18.8 | R | EK012H01 |
| K10K00E | C2010 | 05 | 17.25982 | 16 | 02 | 28.91 | -19 | 52 | 54.2 | 18.9 | R | EK012H01 |
| K10K00E | C2010 | 05 | 17.32642 | 16 | 03 | 02.91 | -20 | 08 | 24.0 | 19.8 | R | EK012926 |
| K10K00E | C2010 | 05 | 17.32876 | 16 | 03 | 04.08 | -20 | 08 | 56.7 | 20.2 | R | EK012926 |
| K10K00E | C2010 | 05 | 17.33111 | 16 | 03 | 05.23 | -20 | 09 | 30.1 | 20.2 | R | EK012926 |

Observer details:

- [651 Grasslands Observatory, Tucson.](#) Observer J. E. McGaha. 0.62-m f/5.1 reflector + CCD.
- [926 Tenagra II Observatory.](#) Observers P. R. Holvorcem, M. Schwartz. Measurer P. R. Holvorcem. 0.81-m f/7 Ritchey-Chretien + CCD.
- [G96 Mt. Lemmon Survey.](#) Observers A. R. Gibbs, L. L. Wohlwend, K. Farnsworth, W. C. Decker, A. Berg. Measurers J. D. Ahern, E. C. Beshore, A. Boattini, G. J. Garradd, A. R. Gibbs, A. D. Grauer, R. E. Hill, R. A. Kowalski, S. M. Larson, R. H. McNaught. 1.5-m reflector + CCD.
- [H01 Magdalena Ridge Observatory, Socorro.](#) Observers W. H. Ryan, E. V. Ryan. Measurer W. H. Ryan. 2.4-m f/8.9 reflector + CCD.
- [J95 Great Shefford.](#) Observer P. Birtwhistle. 0.40-m f/6.0 Schmidt-Cassegrain + CCD.

Press Information Sheets

General

Contact Us

Index

Site Map

Search Site

Tech Info

Documentation

Links

Minor Planet Center

Central Bureau for Astro. Tel.

International Comet Quarterly

Smithsonian Astro. Obs.

Orbital elements:

2010 KE
 Epoch 2010 July 23.0 TT = JDT 2455400.5
 M 16.95228 (2000.0) P
 n 0.66690298 Peri. 224.87376 +0.19365837 +0.97811236
 a 1.2974609 Node 56.43616 -0.87253510 +0.20718275
 e 0.2451089 Incl. 5.24060 -0.44852974 +0.01927503
 P 1.48 H 26.6 G 0.15 U 7

Earth [MOID](#) = 0.0146 AU
 MPC

Residuals in seconds of arc

| | | | | | | | | |
|------------|------|------|------------|------|------|------------|------|------|
| 100516 G96 | 0.0 | 0.1- | 100516 G96 | 0.3+ | 0.1+ | 100517 651 | 0.1+ | 0.1+ |
| 100516 G96 | 0.1- | 0.0 | 100516 G96 | 0.3- | 0.0 | 100517 651 | 0.7+ | 0.1- |
| 100516 G96 | 0.0 | 0.0 | 100516 G96 | 0.0 | 0.1+ | 100517 H01 | 0.1- | 0.3+ |
| 100516 G96 | 0.4+ | 0.2- | 100517 J95 | 0.3- | 0.2+ | 100517 H01 | 0.2- | 0.2+ |
| 100516 G96 | 0.5- | 0.2+ | 100517 J95 | 0.7+ | 0.7- | 100517 H01 | 0.2- | 0.1+ |
| 100516 G96 | 0.5+ | 0.3+ | 100517 J95 | 0.6- | 0.1+ | 100517 926 | 0.3+ | 0.2- |
| 100516 G96 | 0.2+ | 0.1+ | 100517 H01 | 0.1- | 0.3+ | 100517 926 | 0.6+ | 0.1+ |
| 100516 G96 | 0.0 | 0.0 | 100517 651 | 0.6- | 0.7+ | 100517 926 | 0.5+ | 0.2- |

Ephemeris:

2010 KE a,e,i = 1.30, 0.25, 5 q = 0.9794

| Date | TT | R. A. (2000) | Decl. | Delta | r | Elong. | Phase | V |
|------------|----|--------------|----------|--------|-------|--------|-------|------|
| 2010 05 14 | | 15 39.22 | -10 23.2 | 0.0384 | 1.049 | 170.9 | 8.8 | 20.2 |
| 2010 05 15 | | 15 44.75 | -12 42.6 | 0.0352 | 1.046 | 172.5 | 7.3 | 20.0 |
| 2010 05 16 | | 15 51.48 | -15 29.4 | 0.0321 | 1.043 | 173.8 | 6.0 | 19.7 |
| 2010 05 17 | | 15 59.86 | -18 50.0 | 0.0291 | 1.040 | 173.9 | 5.9 | 19.5 |
| 2010 05 18 | | 16 10.51 | -22 52.5 | 0.0263 | 1.038 | 171.7 | 8.1 | 19.4 |
| 2010 05 19 | | 16 24.44 | -27 45.4 | 0.0238 | 1.035 | 167.4 | 12.3 | 19.3 |
| 2010 05 20 | | 16 43.24 | -33 35.1 | 0.0216 | 1.032 | 161.3 | 18.3 | 19.3 |
| 2010 05 21 | | 17 09.54 | -40 19.8 | 0.0197 | 1.030 | 153.6 | 25.9 | 19.3 |
| 2010 05 22 | | 17 47.58 | -47 37.3 | 0.0185 | 1.027 | 144.3 | 35.1 | 19.4 |
| 2010 05 23 | | 18 43.20 | -54 28.9 | 0.0178 | 1.025 | 133.9 | 45.3 | 19.6 |
| 2010 05 24 | | 19 59.75 | -59 17.5 | 0.0178 | 1.022 | 123.1 | 56.0 | 19.9 |
| 2010 05 25 | | 21 27.12 | -60 38.3 | 0.0185 | 1.020 | 112.8 | 66.2 | 20.3 |
| 2010 05 26 | | 22 43.73 | -58 46.3 | 0.0199 | 1.018 | 103.7 | 75.2 | 20.8 |
| 2010 05 27 | | 23 39.45 | -55 13.0 | 0.0217 | 1.016 | 96.0 | 82.8 | 21.2 |
| 2010 05 28 | | 00 17.60 | -51 15.4 | 0.0239 | 1.013 | 89.7 | 89.0 | 21.7 |
| 2010 05 29 | | 00 44.05 | -47 30.4 | 0.0264 | 1.011 | 84.6 | 93.9 | 22.1 |
| 2010 05 30 | | 01 03.02 | -44 10.5 | 0.0291 | 1.009 | 80.6 | 97.8 | 22.5 |
| 2010 05 31 | | 01 17.15 | -41 16.9 | 0.0319 | 1.007 | 77.4 | 100.8 | 22.8 |
| 2010 06 01 | | 01 28.03 | -38 47.2 | 0.0349 | 1.005 | 74.8 | 103.2 | 23.1 |

Carl W. Hergenrother

(C) Copyright 2010 MPC

M.P.E.C. 2010-K12



[Read MPEC 2010-K11](#)



[Read MPEC 2010-K13](#)

Display

MPEC number:

Clear

Enter an [MPEC](#) number in one of the following forms:

- 1997-B01 (the full form)
- J97B01 (the packed version of the full form)
- B01 (the abbreviated form)



Choose a language to translate this page!



Select to language

Google Translate

Select Language



Gadgets powered by Google

